



80 Pelham Street entrance

Dear Neighbour

Our summer newsletter provides the latest updates on the redevelopment of 40 and 80 Pelham Street, as the teams start to ramp up activity on the sites.

What's been happening

Over the last couple of months, scaffolding has been erected around both sites with pedestrian walkways created including CCTV and lighting to make sure Pelham Street remains safe for local residents.

Both teams have been busy preparing the buildings for demolition. The inside of 80 Pelham Street has been cleared with all waste being recycled except hazardous material. Demolition work is now in full swing and the top two floors of 80 Pelham Street have been removed. At the bottom of the building, the basement is being made ready for the start of the main piling works.

Across the road, the team at 40 Pelham Street is busy stripping out the building and the first part of the garages are being dismantled.

Save the date!

We would like to invite you to our next construction meeting to provide an overview of upcoming works. Our site managers will be on hand to answer any questions you may have.

Date: 17th September 2024

Time: 5.30pm-6.30pm

Venue: The community room,
Marlborough Primary School,
Draycott Avenue, SW3 3AP

Everyone is very welcome to attend the meeting. Please register your attendance by calling us on **0808 281 9554** or emailing **construction@cascadecommunications.co.uk**

40 Pelham Street – A look ahead

We are currently in the midst of strip-out work, which should finish by the end of September. After that, dismantling the western building will begin, targeting completion of the existing floor slabs and the east and west walls by the end of October. Once this is done, temporary steelworks in the eastern building to support the external walls will commence.

40 Pelham Street: A clean sweep

During our recent site inspection, we were pleased to have met the ‘excellent’ criteria across all areas, scoring a total of 39 out of 45. The site was recognised for being kept clean and tidy.

We are committed to strong environmental practices. Our environmental measures are actively promoted during workforce induction. Carbon footprint reporting and reduction strategies are in place, and we are continuously looking for ways to improve. Safety is a key focus, with effective safety measures implemented with active workforce involvement. We also promote healthy living and mental health awareness on-site, and our site manager will soon attend a mental health first aid training course to further support our team.



Strip out works are ongoing

Did you know?

We aim to recycle all non-hazardous material removed from 40 Pelham Street. This means we'll recycle 99.9% of waste material.

We will also be teaming up with a local salvage company to give salvaged materials, like wood, roof tiles, and windows, a chance for reuse.

Fun fact

Before the Controlled Waste Regulations were implemented in 2012, a staggering 80% of materials sent to landfill could have actually been recycled!

For questions about the works, please contact



Danny Magnus
Neilcott Construction
Email: dmagnus@neilcott.co.uk
Phone: 07957 126 325

Exciting progress at 80 Pelham Street

Over the summer and autumn, the building at 80 Pelham Street will be demolished floor by floor. By October, the demolition will be completed, and the main piling works will begin in the basement. Once this phase is finished, tower crane works will commence.

We are planning to introduce a pitlane in mid-September along 63-89 Pelham Street. This will allow the one-way traffic system along Pelham Street to be put into place.

Considerate Constructors visit – 80 Pelham Street

We're pleased to share that following our first visit from the Considerate Constructors auditors, the site was awarded an impressive score of 42 out of 45. This acknowledges that the site has met the criteria with an ‘excellent’ rating across all areas. We were especially praised for our effective site management, professional image, and commitment to cleanliness.

Safety remains our top priority. The auditors noted our numerous safety and emergency measures implemented throughout the site. We also promote healthy living through mental health awareness initiatives and are proud to have a mental health first aider on-site to support our team.



Demolition works are underway

For questions about the works, please contact

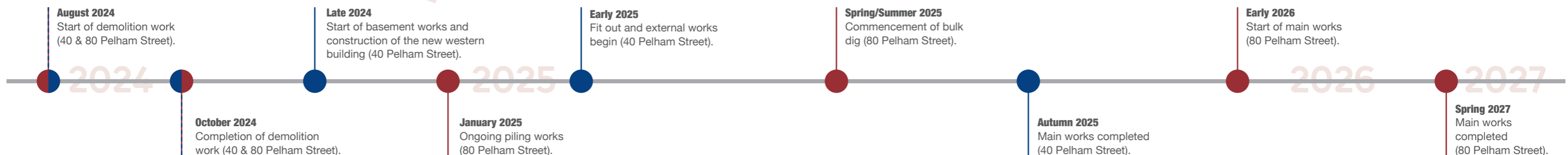


Kali Hagenstede
Erith Contractors
Email: kali.hagenstede@erith.com
Phone: 07884 588 737

If you have any questions

Cascade Communications has supported the Wellcome Trust since the start of planning for the project and will continue to work with the community throughout construction.

If you have any general questions about the projects, please contact the Cascade team on **0808 281 9554** or email construction@cascadecommunications.co.uk



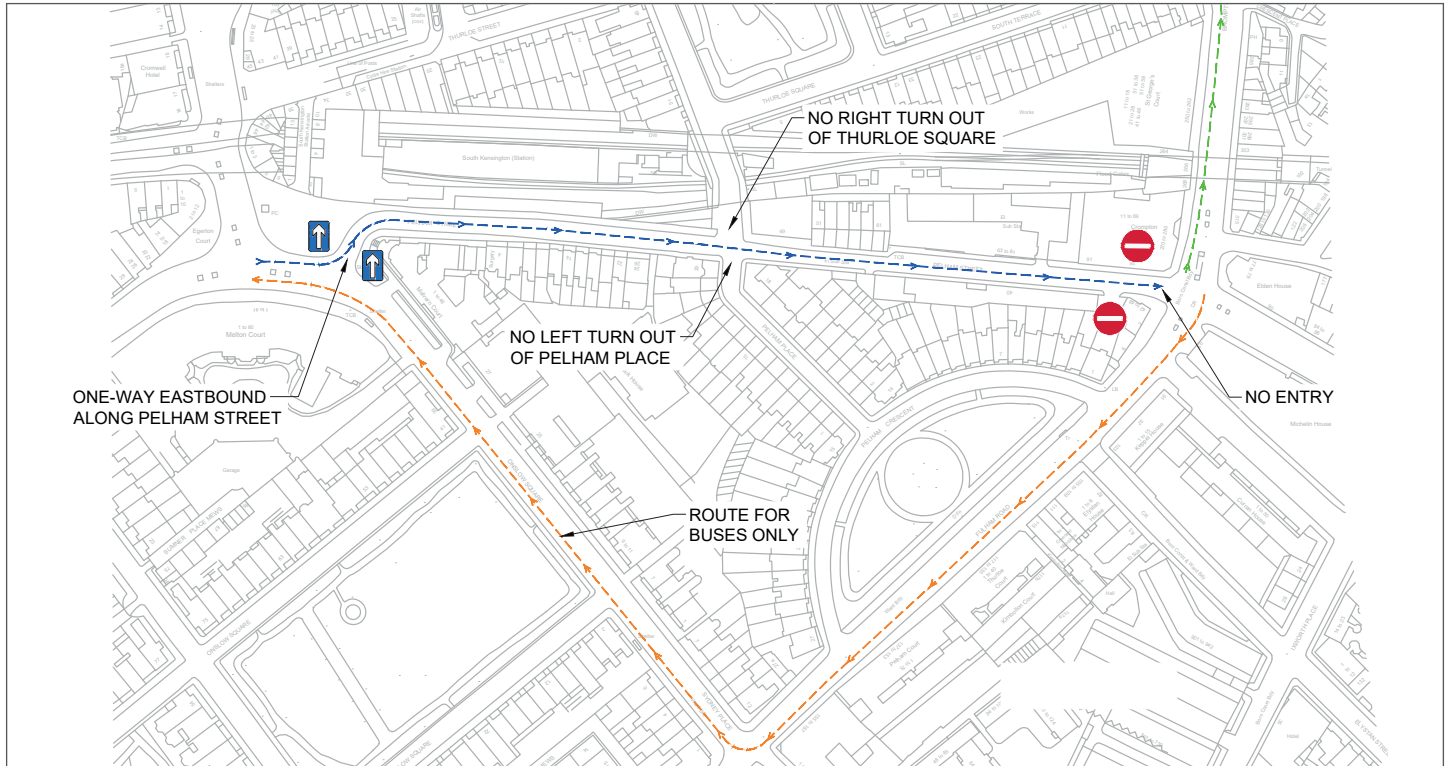
Construction information

Traffic and deliveries

We now have the necessary permission to implement a one-way system along Pelham Street towards the end of September, shown on the map below. Pelham Street will operate as one-way eastbound from South Kensington Station to Brompton Road, highlighted in **blue**. This one-way system will be in effect from Monday morning to Friday afternoon, creating an on-street loading bay for construction vehicles. The street will revert to two-way traffic on weekends.

Diversion details

Vehicles trying to enter Pelham Street from Brompton Road will be diverted north along Brompton Road to the A4, shown in **green** on the plan. The diversion route will be in place on weekdays only for the duration of the works. Buses can turn left onto Fulham Road and left onto Sydney Place, shown in **orange** on the plan. Signage will direct traffic and indicate local access only for residents.



Diversion map – in operation Monday morning to Friday afternoon

Work is being carried out between the hours agreed with RBKC. Site working hours are as follows:

Monday to Friday: 8am-6pm

Saturdays, Sundays and Bank Holidays: No works without prior approval from RBKC

High impact activities

Monday to Friday: 9am -12pm and 2pm - 5.30pm

Deliveries

Monday to Friday: 9:30am-4:30pm

Considerate Constructors Scheme (CSS)

Both our sites are signed up to the Considerate Constructors Scheme (CCS), which is designed to encourage best practice within the construction industry. Our contractors and sites will be regularly monitored by the CSS to ensure the highest standards are maintained.



Sign up for updates

Subscribe to our mailing list for weekly construction updates to receive information on forthcoming works by emailing construction@cascadecommunications.co.uk

Website: www.40-63pelhamstreetproposals.co.uk

Email: construction@cascadecommunications.co.uk | Phone: 0808 281 9554